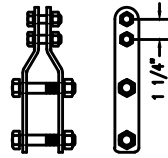
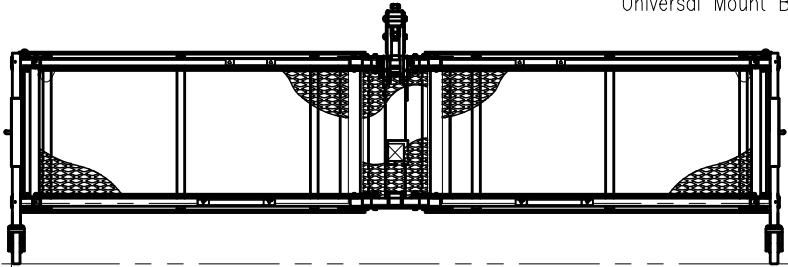




Minimum size opening for workbasket to pass through 24" diameter or 14" x 20" rectangular opening.



Universal Adapter is supplied with all Universal Mount Baskets



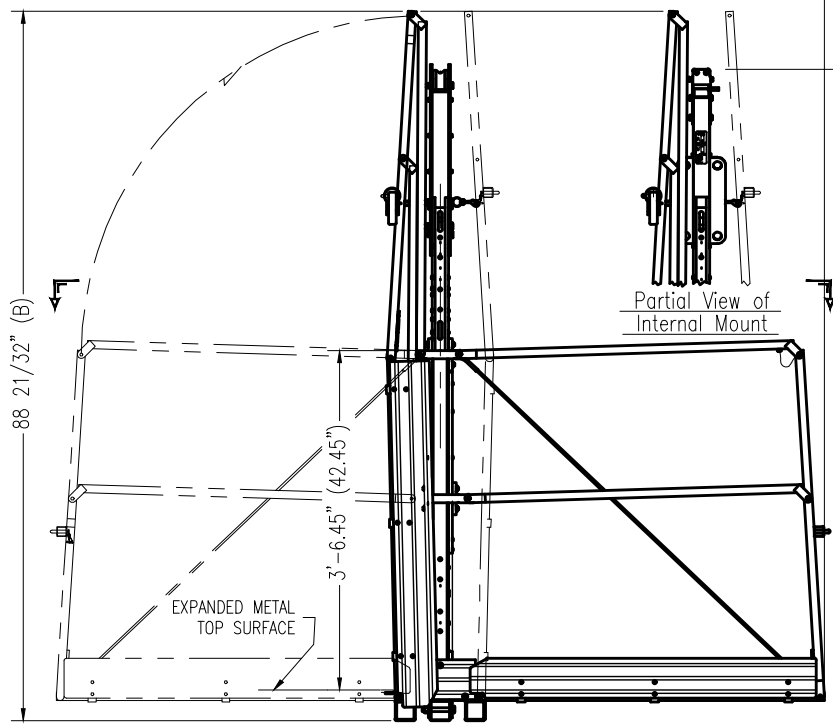
SECTION A-A

Unfolded Length "A"

FOLD-UP WORKBASKET

Model No.	Hoist Mount Style	Length "A"	Height "B"	Weight
143-530	External	8 Ft. (96")	88 21/32"	227 lbs.
143-530S	External, Safway	8 Ft. (96")	88 21/32"	234 lbs.
143-530U	External, Universal	8 Ft. (96")	88 21/32"	229 lbs.
143-531	External	6 Ft. (72")	82"	207 lbs.
143-531S	External, Safway	6 Ft. (72")	82"	215 lbs.
143-531U	External, Universal	6 Ft. (72")	82"	209 lbs.
143-532	External	4 Ft. (48")	82"	184 lbs.
143-532S	External, Safway	4 Ft. (48")	82"	192 lbs.
143-532U	External, Universal	4 Ft. (48")	82"	186 lbs.
143-533	Internal	8 Ft. (96")	88 21/32"	220 lbs.
143-533S	Internal, Safway	8 Ft. (96")	88 21/32"	228 lbs.
143-533U	Internal, Universal	8 Ft. (96")	88 21/32"	222 lbs.
143-534	Internal	6 Ft. (72")	81 13/32"	202 lbs.
143-534S	Internal, Safway	6 Ft. (72")	81 13/32"	209 lbs.
143-534U	Internal, Universal	6 Ft. (72")	81 13/32"	204 lbs.
143-535	Internal	4 Ft. (48")	81 13/32"	178 lbs.
143-535S	Internal, Safway	4 Ft. (48")	81 13/32"	186 lbs.
143-535U	Internal, Universal	4 Ft. (48")	81 13/32"	180 lbs.

ROLLER BUMPERS INCLUDED WITH FOLD-UP WORKBASKETS LOAD CAPACITY: 1000 LBS.



External Mount

